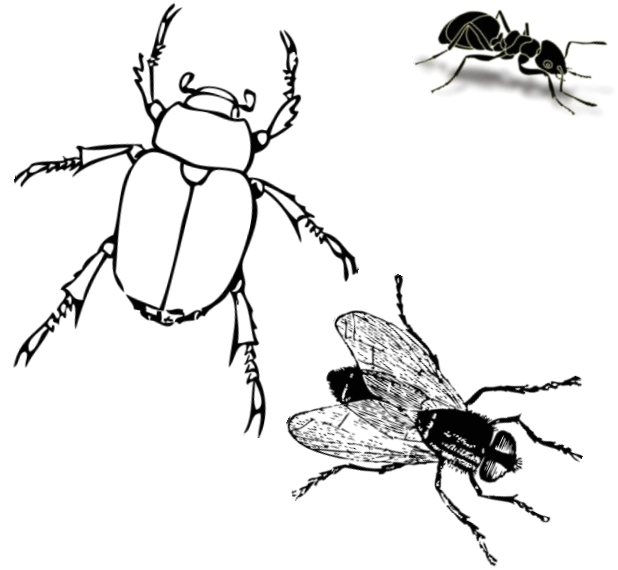


Imagine you are an **INSECT**, moving around the gallery

What do you look like? Draw or write about it here:



As an insect all the art looks a little different, can you explain how?

Is it because you are a different size?

Is it because you fly very high, or perhaps because you crawl on the ground?

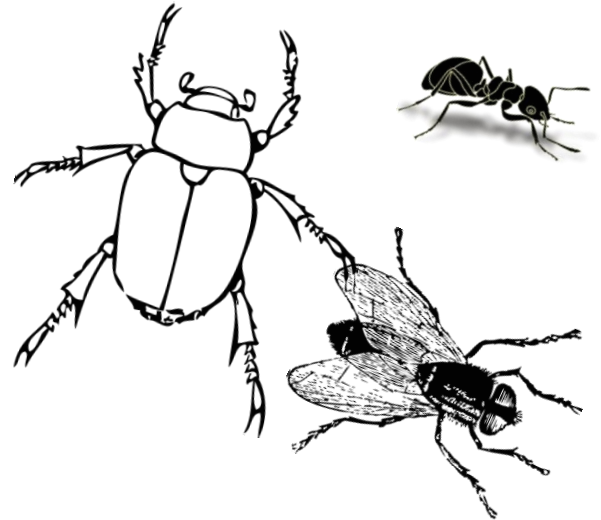
Is seeing art differently as an Insect good or bad?

As an insect, which artwork, part of an artwork or part of the gallery do you like best?

Why? Draw or write about it here:

Dychmygwch eich bod yn **BRYFYN**, yn symud o amgylch yr oriel

Sut olwg sydd arnoch chi? Ysgrifennwch neu dynnwch lun yma:



Fel pryfyn, bydd pob darn o waith yn edrych ychydig bach yn wahanol, allwch chi egluro sut?

Ai oherwydd eich maint gwahanol?

Ai oherwydd eich bod yn hedfan yn uchel iawn, neu efallai eich bod yn cropian ar y tir?

Ydy gweld celf mewn ffordd wahanol am eich bod yn bryfyn yn beth da neu ddrwg?

Fel pryfyn, pa ran o'r gwaith celf neu'r oriel yw eich hoff ran?

Pam? Ysgrifennwch neu dynnwch lun yma:
